



AVIATION PRICE LIST

ITEM #	DESCRIPTION	*	PRICE EACH
SHIRTS			
65415-83	Denim Shirt - LS	*	18.90
65415-83	Denim Shirt - SS	*	17.60
332-85	Chambray Buttondown Shirt - LS	*	18.20
332-85	Chambray Buttondown Shirt - SS	*	17.45
528-00	Women's Oxford Buttondown Shirt/White - LS	*	14.95
528-00	Women's Oxford Buttondown Shirt/White - SS	*	13.80
528-80	Women's Oxford Buttondown Shirt/Lt. Blue - LS	*	14.95
528-80	Women's Oxford Buttondown Shirt/Lt. Blue - SS	*	13.80
828-00	Executive Oxford Shirt/White - LS	*	17.50
828-00	Executive Oxford Shirt/White - SS	*	16.00
828-80	Executive Oxford Shirt/Lt. Blue - LS	*	17.50
828-80	Executive Oxford Shirt/Lt. Blue - SS	*	16.00
65844-23	Oxford Shirt/French Blue - LS	*	23.45
65844-23	Oxford Shirt/French Blue - SS	*	21.05
838-00	Aviator Shirt/White - LS	*	22.30
838-00	Aviator Shirt/White - SS	*	20.35
838-80	Aviator Shirt/Lt. Blue - LS	*	22.30
838-80	Aviator Shirt/Lt. Blue - SS	*	20.35
65828-00	Cotton Twill Buttondown/White - LS	*	18.35
65828-00	Cotton Twill Buttondown/White - SS	*	17.60
65828-62	Cotton Twill Buttondown/Khaki w/Navy - LS	*	18.35
65828-62	Cotton Twill Buttondown/Khaki w/Navy - SS	*	17.60
65828-20	Cotton Twill Buttondown/Navy w/Hunter Green - LS	*	18.35
65828-20	Cotton Twill Buttondown/Navy w/Hunter Green - SS	*	17.60
65828-44	Cotton Twill Buttondown/Hunter Green w/Navy - LS	*	18.35
65828-44	Cotton Twill Buttondown/Hunter Green w/Navy - SS	*	17.60
65828-35	Cotton Twill Buttondown/Black - LS	*	18.35
65828-35	Cotton Twill Buttondown/Black - SS	*	17.60
831-80	Dress Poplin Shirt/Lt. Blue - LS	*	20.30
831-80	Dress Poplin Shirt/Lt. Blue - SS	*	17.35
259-21	ProKnit Shadowbox Weave Shirt/Navy - SS	*	23.90
69524-33	Herringbone Knit/Charcoal/Black - SS	*	18.55
69524-62	Herringbone Knit/Khaki/Gray - SS	*	18.55
69917-20	Women's Interlock Knit/Navy - SS	*	23.45
69917-00	Women's Interlock Knit/White - SS	*	23.45
69917-70	Women's Interlock Knit/Yellow - SS	*	23.45
69180-00	Knit Shirt w/o Pocket/White - SS	*	15.40
69180-15	Knit Shirt w/o Pocket/Red - SS	*	15.40
69180-16	Knit Shirt w/o Pocket/Burgundy - SS	*	15.40

Add \$1.95 to Tops 2XL & Up.

Add \$2.50 to Bottoms: Men's 44" & Up and Ladies' Size 24 & Up.



AVIATION PRICE LIST

ITEM #	DESCRIPTION	PRICE EACH
SHIRTS		
69180-30	Knit Shirt w/o Pocket/Grey - SS *	15.40
69180-20	Knit Shirt w/o Pocket/Navy - SS *	15.40
69180-35	Knit Shirt w/o Pocket/Black - SS *	15.40
69180-44	Knit Shirt w/o Pocket/Hunter Green - SS *	15.40
69181-00	Polo Shirt w/Pocket/White - SS *	16.50
69181-15	Polo Shirt w/Pocket/Red - SS *	16.50
69181-16	Polo Shirt w/Pocket/Burgundy - SS *	16.50
69181-20	Polo Shirt w/Pocket/Navy - SS *	16.50
69181-30	Polo Shirt w/Pocket/Grey - SS *	16.50
69181-35	Polo Shirt w/Pocket/Black - SS *	16.50
69181-44	Polo Shirt w/Pocket/Hunter Green - SS *	16.50
69148-00	Knit Pique Shirt w/Pocket/White - SS *	19.85
69148-15	Knit Pique Shirt w/Pocket/Red - SS *	19.85
69148-16	Knit Pique Shirt w/Pocket/Burgundy - SS *	19.85
69148-20	Knit Pique Shirt w/Pocket/Navy - SS *	19.85
69148-30	Knit Pique Shirt w/Pocket/Grey - SS *	19.85
69148-35	Knit Pique Shirt w/Pocket/Black - SS *	19.85
69148-44	Knit Pique Shirt w/Pocket/Hunter - SS *	19.85
69951-00	Cutter & Buck Tournament Polo/White - SS *	30.00
69951-20	Cutter & Buck Tournament Polo/Navy - SS *	30.00
69951-35	Cutter & Buck Tournament Polo/Black - SS *	30.00
69951-70	Cutter & Buck Tournament Polo/Yellow - SS *	30.00
65102-30	Kenton Shirt/Lt. Grey - LS *	17.30
65102-30	Kenton Shirt/Lt. Grey - SS *	15.05
69290-20	Knit Embroidered/White w/Navy - SS *	21.05
69289-20	Knit Embroidered/Navy w/White - SS *	23.05
PANTS		
448-20	Pleated Short/Navy	18.95
448-62	Pleated Short/Khaki	18.95
79895-20	Dickies Cargo Short/Navy	24.60
79895-62	Dickies Cargo Short/Khaki	24.60
865-20	Pleated Dress Uniform Pant/Navy	15.95
865-33	Pleated Dress Uniform Pant/Charcoal	15.95
865-62	Pleated Dress Uniform Pant/Khaki	15.95
596-20	Women's Pleated Dress Uniform Pant/Navy	17.40
596-33	Women's Pleated Dress Uniform Pant/Charcoal	17.40
596-62	Women's Pleated Dress Uniform Pant/Khaki	17.40

If inseam is not provided, pants will be shipped unhemmed.

Add \$1.95 to Tops 2XL & Up.
 Add \$2.50 to Bottoms: Men's 44" & Up and Ladies' Size 24 & Up.



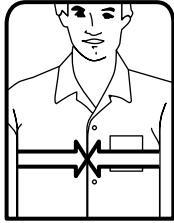
AVIATION PRICE LIST

ITEM #	DESCRIPTION	PRICE EACH
OUTERWEAR		
912-20	Coverall/Navy*	24.00
914-20	Insulated Twill Coverall/Navy *	47.05
80169-22	Parka/Navy *	43.15
80188-22	Jacket Liner/Navy *	34.75
80600-20	Lightweight Jacket/Navy *	23.79
80600-62	Lightweight Jacket/Khaki *	23.79
69414-20	Nylon Windshirt/Navy *	22.95
HATS		
85404-35	Eargrips/Black *	11.50
120-20	Knit Cap w/Facemask/Navy *	8.70
85540-20	Sandwich Baseball Cap/Navy *	9.95
85356-20	Baseball Cap/Navy/Khaki *	8.05
85326-62	Baseball Cap/Khaki w/Navy Bill *	8.95
128-15	Twill & Mesh Baseball Cap/Red *	8.15
128-20	Twill & Mesh Baseball Cap/Navy *	8.15
86941-35	Canvas Glove/Black *	9.95
ACCESSORIES		
822-57	Safety Vest/Orange	8.20
123-35	Back Support Belt/Black	14.35
137-35	Leather No Scratch Belt/Black	9.55
89400-15	Fleece Blanket/Red *	17.60
89400-20	Fleece Blanket/Navy *	17.60
89400-33	Fleece Blanket/Charcoal *	17.60
89400-35	Fleece Blanket/Black *	17.60
89719-20	Cooler w/Plastic Liner/Navy *	16.70
89719-35	Cooler w/Plastic Liner/Black *	16.70
68204-36	Duffle Bag/Black *	18.50
WOMEN'S		
82217-01	Bill Blass Sweater/Bone - SS *	27.80
82217-20	Bill Blass Sweater/Navy - SS *	27.80
82217-30	Bill Blass Sweater/Grey - SS *	27.80
82217-35	Bill Blass Sweater/Black - SS *	27.80
82218-01	Bill Blass Cardigan/Bone - LS *	32.95
82218-20	Bill Blass Cardigan/Navy - LS *	32.95
82218-30	Bill Blass Cardigan/Grey - LS *	32.95
82218-35	Bill Blass Cardigan/Black - LS *	32.95

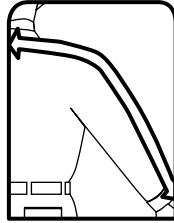
Seasonal
 Products
 Available while
 supplies last.

One Size
M
 Fits All

HOW TO MEASURE MEN



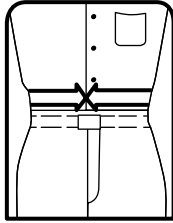
CHEST: Measure across the fullest part of the chest, under arms and across back.



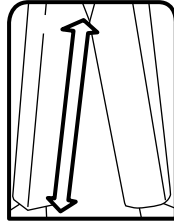
SLEEVE LENGTH: Measure from center of outside collar, over the shoulder, around elbow to point where sleeve should end (usually bottom of wristbone). Number of inches is sleeve length.



NECK: Measure around neck as illustrated. Number of inches is neck size.

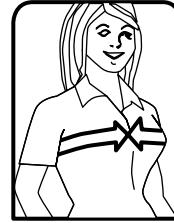


WAIST: Measurement should be taken over shirt at waistline (where pants are normally worn). Tape should be as snug as desired for pants. Number of inches is waist size.

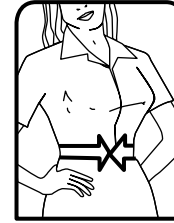


INSEAM: After adjusting pants to position normally worn, measure from crotch to top of shoe (or desired length).

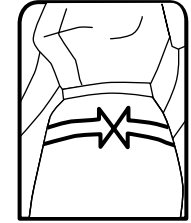
HOW TO MEASURE WOMEN



BUST: Measure under the arms and around the fullest part of the bust.



WAIST: Measure around the narrowest part of the natural waistline (just above the hip bones).



HIPS: Measure around the fullest part of the hips normally 7 to 8 inches below natural waistline.

If your size is not shown below as available, please call us at **1-800-543-4450** for available sizes.

Cintas may be able to provide you with specially manufactured garments - *only applicable on garments indicated (*)*.

Please add 50% to the price and allow 10 weeks for delivery. These specially made garments cannot be returned for size exchange.

SIZE CODES - For Shirts/Jackets/Vests

SS = Short Sleeve

SH = 1" shorter sleeve length than RG & 1^{1/2}" shorter back length than RG

RG = Regular sleeve length & back length

LN = 1" longer sleeve length than RG & 1^{1/2}" longer back length than RG

LJ = 2" longer sleeve length than RG & 4" longer back length than RG

XJ = 3" longer sleeve length than RG & 4" longer back length than RG

LJ/SS = 4" longer back length than RG

***Women's Oxford No. 528-80**

ORDER SIZE	4	6	8	10	12	14	16	18	20	22	24	26	28	30	32	34
Bust Measurement	33 ^{1/2} -35 ^{1/2}	34 ^{1/2} -36 ^{1/2}	35 ^{1/2} -37 ^{1/2}	36 ^{1/2} -38 ^{1/2}	38-40	39 ^{1/2} -41 ^{1/2}	41-43	43-45	45-47	47-49	49-51	51-53	53-55	55-57	57-59	59-61
Short Sleeve (SS)	X	X	X	X	X	X	X	X	X	X	X	X	X	X	X	X
Long Sleeve (RG)	X	X	X	X	X	X	X	X	X	X	X	X	X	X	N/A	N/A
Long Length Sleeve (LN)	N/A	X	X	X	X	X	X	X	X	X	X	N/A	X	N/A	N/A	N/A

LJ/SS available in size 20.

Denim Shirt No. 65415-83

ORDER SIZE	XS	S	M	L	XL	2XL	3XL	4XL	5XL
Neck Measurement	13-13 ^{1/2}	14-14 ^{1/2}	15-15 ^{1/2}	16-16 ^{1/2}	17-17 ^{1/2}	18-18 ^{1/2}	19-19 ^{1/2}	20-20 ^{1/2}	21-21 ^{1/2}
Chest Measurement	30-32	34-36	38-40	42-44	46-48	50-52	54-56	58-60	62-64
Short Sleeve (SS)	N/A	X	X	X	X	X	X	X	X
Long Sleeve (RG)	X	X	X	X	X	X	X	X	X
Long Sleeve (LN)	N/A	N/A	X	X	X	X	X	N/A	N/A

Chambray Shirt No. 332-85

ORDER SIZE	XS	S	M	L	XL	2XL	3XL
Chest Measurement	34-36	38-40	42-44	46-48	50-52	54-56	58-60
Short Sleeve (SS)	SS	SS	SS	SS	SS	SS	SS
Regular Sleeve (RG)	23	23 ^{1/4}	23 ^{1/2}	23 ^{3/4}	24	24 ^{1/2}	24 ^{1/2}

***Women's Oxford No. 528-00**

ORDER SIZE	4	6	8	10	12	14	16	18	20	22	24	26	28	30	32	34
Bust Measurement	33 ^{1/2} -35 ^{1/2}	34 ^{1/2} -36 ^{1/2}	35 ^{1/2} -37 ^{1/2}	36 ^{1/2} -38 ^{1/2}	38-40	39 ^{1/2} -41 ^{1/2}	41-43	43-45	45-47	47-49	49-51	51-53	53-55	55-57	57-59	59-61
Short Sleeve (SS)	X	X	X	X	X	X	X	X	X	X	X	X	X	X	X	X
Long Sleeve (RG)	X	X	X	X	X	X	X	X	X	X	X	X	X	X	N/A	N/A
Long Length Sleeve (LN)	N/A	X	X	X	X	X	X	X	X	X	X	N/A	N/A	N/A	N/A	N/A

FOLD TWICE

From _____
 Name _____
 Street _____
 City/State/Zip _____



NO POSTAGE
NECESSARY IF
MAILED IN THE
UNITED STATES

BUSINESS REPLY CARD
 FIRST CLASS PERMIT #10195 CINCINNATI OHIO

POSTAGE WILL BE PAID BY ADDRESSEE

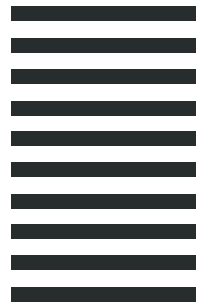


ATTN: National Account Customer Service Dept.

6800 Cintas Boulevard

PO BOX 625737

CINCINNATI OH 45262-9981



PHILLIPS AVIATION



***Executive Oxford No. 828-00**

ORDER NECK SIZE	14	14 1/2	15	15 1/2	16	16 1/2	17	17 1/2	18	18 1/2	19	19 1/2	20	20 1/2	21	21 1/2	22	22 1/2	24
Short Sleeve	X	X	X	X	X	X	X	X	X	X	X	X	X	X	X	X	X	X	X
Order (SH) If Sleeve is 30-31	X	X	X	X	X	X	N/A	N/A	X	N/A	N/A	N/A	N/A	N/A	N/A	N/A	N/A	N/A	N/A
Order (RG) If Sleeve is 32-33	X	X	X	X	X	X	X	X	X	X	X	X	X	X	X	X	X	X	X
Order (LN) If Sleeve is 34-35	X	X	X	X	X	X	X	X	X	X	X	X	X	X	X	X	X	X	N/A
LJ SS Sleeve Length & Long Body	N/A	N/A	N/A	X	X	X	X	X	X	X	X	X	X	X	X	X	X	X	N/A
LJ 36-37 Sleeve Length & Long Body	N/A	N/A	N/A	X	X	X	X	X	X	X	X	X	X	X	X	X	X	N/A	N/A
2J 38-39 Sleeve Length & Long Body	N/A	N/A	N/A	N/A	N/A	X	X	X	X	X	X	X	X	X	N/A	N/A	X	N/A	N/A

XJ is available in sizes 16 1/2 - 18 1/2.

***Executive Oxford No. 828-80**

ORDER NECK SIZE	13	14	14 1/2	15	15 1/2	16	16 1/2	17	17 1/2	18	18 1/2	19	19 1/2	20	20 1/2	21	21 1/2	22	22 1/2	24
Short Sleeve (SS)	N/A	X	X	X	X	X	X	X	X	X	X	X	X	X	X	X	X	X	X	X
Order (SH) If Sleeve is 30-31	N/A	X	X	X	X	X	X	N/A	N/A	N/A	N/A	N/A	N/A	N/A	N/A	N/A	N/A	N/A	N/A	N/A
Order (RG) If Sleeve is 32-33	X	X	X	X	X	X	X	X	X	X	X	X	X	X	X	X	X	X	X	X
Order (LN) If Sleeve is 34-35	N/A	X	X	X	X	X	X	X	X	X	X	X	X	X	X	X	X	X	X	N/A
LJ 36-37 Sleeve Length & Long Body	N/A	N/A	N/A	N/A	X	X	X	X	X	X	X	X	X	X	X	X	X	X	N/A	N/A
2J 38-39 Sleeve Length & Long Body	N/A	N/A	N/A	N/A	N/A	N/A	X	X	X	X	X	X	X	X	N/A	N/A	X	N/A	N/A	

XJ available in sizes 16 1/2, 17 1/2-18 1/2.

***Oxford Shirt No. 65844-23**

ORDER SIZE	S	M	L	XL	2XL	3XL	4XL
Neck Measurement	14-14 1/2	15-15 1/2	16-16 1/2	17-17 1/2	18-18 1/2	19-19 1/2	20-20 1/2
Chest Measurement	37 1/2-39 1/2	41 1/2-43 1/2	45 1/2-47 1/2	49 1/2-51 1/2	53 1/2-55 1/2	57 1/2-59 1/2	61 1/2-63 1/2
Short Sleeve (SS)	X	X	X	X	X	X	X
Regular Length (RG)	X	X	X	X	X	N/A	N/A
Long Length (LN)	N/A	N/A	X	X	X	X	X
Long John Body (LJ)	N/A	N/A	N/A	X	X	N/A	N/A

Sizes 4XL RG and 4XL LJ are available as a cut special.

***Aviator Shirt No. 838-00 & 838-80**

ORDER SIZE	S	M	L	XL	2XL	3XL
Neck Size	14 1/2	15-15 1/2	16-16 1/2	17-17 1/2	18-18 1/2	19-19 1/2
Chest Measurement	37-39	41-43	45-47	53-55	57-59	61-63
Short Sleeve (SS)	X	X	X	X	X	X
Long Sleeve (RG)	X	X	X	X	X	N/A

***Dress Poplin Shirt No. 831-80**

ORDER SIZE	S	M	L	XL	2XL	3XL	4XL
Neck Measurement	14-14 1/2	15-15 1/2	16-16 1/2	17-17 1/2	18-18 1/2	19-19 1/2	20-20 1/2
Chest Measurement	36-38	40-42	44-46	48-50	52-54	56-58	60-62
Short Sleeve (SS)	SS	SS	SS	SS	SS	SS	SS
Long Sleeve (RG)	33	33 1/2	34	34 1/2	35	35	N/A
Long Sleeve (LN)	N/A	34 1/2	35	36	36	36	N/A

LJ available in sizes L-3XL / LJ/SS sizes XL- 3XL

Cotton Twill No. 65828-00,20, 35, 44 & 62

ORDER SIZE	XS	S	M	L	XL	2XL	3XL	4XL
Neck Measurement	13-13 1/2	14-14 1/2	15-15 1/2	16-16 1/2	17-17 1/2	18-18 1/2	19-19 1/2	20-20 1/2
Chest Measurement	34-36	38-40	42-44	46-48	50-52	54-56	58-60	62-64
Short Sleeve (SS)	X	X	X	X	X	X	X	X
Long Sleeve (RG)	X	X	X	X	X	X	X	X

***ProKnit Shirt No. 259-21**

ORDER SIZE	S	M	L	XL	2XL	3XL	4XL	5XL
Chest Measurement	32-34	36-38	40-42	44-46	48-50	52-54	56-58	60-62

Knit Embroidered No. 69290-20**Knit Embroidered No. 69289-20**

ORDER SIZE	S	M	L	XL	2XL	3XL
Chest Measurement	36-38	38-40	40-42	42-44	46-48	49-51
Unisex-Generous Cut. Measurements reflect approximate size after initial washing. If between sizes, order smaller						

Herringbone Knit No. 69524-33 & 62

ORDER SIZE	S	M	L	XL	2XL	3XL
Chest Measurement	35-37	39-41	43-45	47-49	51-53	55-57

Women's Interlock Knit No. 69917-00, 20 & 70

ORDER SIZE	S	M	L	XL	2XL
Chest Measurement	30-32	34-36	38-40	42-44	46-48

Knit Shirt No. 69180-00 & 20**Knit Shirt No. 69180-15 (S-6XL)**

ORDER SIZE	XS	S	M	L	XL	2XL	3XL	4XL	5XL	6XL
Chest Measurement	28-30	32-34	36-38	40-42	44-46	48-50	52-54	56-58	60-62	64-66

Knit Shirt No. 69180-35**Knit Shirt No. 69180-16 & 30 (XS-4XL)*****Knit Shirt No. 69180-44 (S-4XL)**

ORDER SIZE	XS	S	M	L	XL	2XL	3XL	4XL	5XL
Chest Measurement	28-30	32-34	36-38	40-42	44-46	48-50	52-54	56-58	60-62

Polo Shirt No. 69181-00, 15, 16, 35 & 44**Polo Shirt No. 69181-20 (S-4XL)**

ORDER SIZE	XS	S	M	L	XL	2XL	3XL	4XL
Chest Measurement	28-30	32-34	36-38	40-42	44-46	48-50	52-54	56-58

Knit Pique Shirt No. 69148-00, 20, & 30**Knit Pique Shirt No. 69148-15, 16, 35 & 44 (S - 4XL)**

ORDER SIZE	XS	S	M	L	XL	2XL	3XL	4XL
Chest Measurement	29-31	33-35	37-39	41-43	45-47	49-51	53-55	57-59

Cutter & Buck Tournament Polo No. 69951-00, 20, 35 & 70

ORDER SIZES	S	M	L	XL	2XL	3XL
Chest Measurement	36-37	38-39	40-41	42-43	44-45	46-47

***Kenton Shirt No. 65102-30**

ORDER SIZE	XS	S	M	L	XL	2XL	3XL
Chest Measurement	35-37	38-40	42-44	46-48	50-52	54-56	58-60
LS available in LN sizes M - 3XL / SS available in LJ size XL							

***Men's Pleated Short No. 448-20**

Available in 1" increments for waist sizes 26, 28-38.

Available in 2" increments for waist sizes 40-60.

Inseam 8".

***Men's Pleated Short No. 448-62**

Available in 1" increments for waist sizes 26,28-38.

Available in 2" increments for waist sizes 40-56 .

Inseam 8"

Cargo Shorts No. 79895-20

Order by waist size

Waist sizes from 30",32"-34" in 1" increments.

Waist sizes from 36"-48" in 2" increments.

Inseam 10"

Cargo Shorts No. 79895-62

Order by waist size:

Waist sizes 30-34 in 1" increments.

Waist sizes 36-48 in 2" increments.

Waist 33 not available.

Inseam 10".

***Men's Pleated Pant No. 865-20**

Available in 1" increments for waist sizes 26,28-38.

Available in 2" increments for waist sizes 40-64.

Inseams up to 35" for waist sizes 26, 28, 50-64.

Inseams up to 36" for waist sizes 29-31, 33, 35 ,37 & 42-48.

Inseams up to 40" for waist sizes 32, 34, 36, 38 & 40.

***Men's Pleated Pant No. 865-33**

Available in 1" increments for waist sizes 26,28-38.

Available in 2" increments for waist sizes 40-60.

Inseams up to 35" for waist sizes 26, 28, 46-60.

Inseams up to 36" for waist sizes 29-44.

***Men's Pleated Pant No. 865-62**

Available in 1" increments for waist sizes 26, 28-38.

Available in 2" increments for waist sizes 40-60.

Inseams up to 35" for waist sizes 26, 28, 48-60.

Inseams up to 36" for waist sizes 29-46.

***Women's Pleated Pant No. 596-20**

***Women's Pleated Pant No. 593-33 & 62 (4-30)**

ORDER SIZE	4	6	8	10	12	14	16	18
Waist Measurement	23 ^{1/2} -24 ^{1/2}	24 ^{1/2} -25 ^{1/2}	25 ^{1/2} -26 ^{1/2}	27-28	28 ^{1/2} -29 ^{1/2}	30-31	32-33	34-35
Hip Measurement	39-40	40-41	41-42	42 ^{1/2} -43 ^{1/2}	44-45	45 ^{1/2} -46 ^{1/2}	47 ^{1/2} -48 ^{1/2}	49 ^{1/2} -52 ^{1/2}
ORDER SIZE	20	22	24	26	28	30	32	34
Waist Measurement	36-37	38-39	40-41	42 ^{1/2} -43 ^{1/2}	45-46	47 ^{1/2} -48 ^{1/2}	50-51	52 ^{1/2} -53 ^{1/2}
Hip Measurement	51 ^{1/2} -52 ^{1/2}	53 ^{1/2} -54 ^{1/2}	55 ^{1/2} -56 ^{1/2}	58 ^{1/2} -59 ^{1/2}	60 ^{1/2} -61 ^{1/2}	63-64	65 ^{1/2} -66 ^{1/2}	68-69
Maximum Inseam is 34".								

SIZE CODES - For Coveralls/Overalls

SH = Order if 5'3" - 5'7"

RG = Order if 5'8" - 5'11^{1/2}"

LN = Order if 6' or taller

***Coverall No. 912-20**

Order Chest Size	34	36	38	40	42	44	46	48	50	52	54	56	58	60	62	64
Short Length (SH)	N/A	N/A	N/A	X	X	X	X	X	X	X	N/A	N/A	N/A	N/A	N/A	N/A
Regular Length (RG)	X	X	X	X	X	X	X	X	X	X	X	X	X	X	X	X
Long Length (LN)	N/A	N/A	X	X	X	X	X	X	X	X	X	X	X	X	N/A	N/A

***Insulated Twill Coverall No. 914-20**

ORDER SIZE	S	M	L	XL	2XL	3XL	4XL	5XL
Chest Size	34-36	38-40	42-44	46-48	50-52	54-56	58-60	62-64
Short Length: SH	X	X	X	X	X	X	N/A	N/A
Regular Length: RG	X	X	X	X	X	X	X	X
Long Length: LN	N/A	X	X	X	X	X	X	N/A
Size 5XL is available as a cut special in LN								

Nylon Windshirt No. 69414-20

ORDER SIZE	S	M	L	XL	2XL
Chest Measurement	39-41	43-45	47-49	51-53	55-57

Parka No. 80169-20

ORDER SIZE	S	M	L	XL	2XL	3XL	4XL	5XL
Chest Measurement	37-39	40-42	44-46	48-50	52-54	56-58	60-62	64-66

***Back Support No. 123-35**

ORDER SIZE	S	M	L	XL	2XL
Waist Measurement	25-30	30-34	34-38	38-42	42-46

Jacket Liner No. 80188-20

ORDER SIZE	S	M	L	XL	2XL	3XL	4XL	5XL
Chest Measurement	36-38	39-41	43-45	47-49	51-53	55-57	59-61	63-65

Canvas Glove No. 86941-35

Size M - 3XL

Bill Blass Sweater No. 82217-01, 20, 30 & 35

Bill Blass Cardigan No. 82218-01, 20, 30 & 35

ORDER SIZE	S	M	L	XL	2XL
Sizes	4-6	8-10	12-14	16-18	20-22

Lightweight Jacket No. 80600-20 & 62

ORDER SIZE	XS	S	M	L	XL	2XL	3XL
Chest Measurement	33-35	36-38	40-42	44-46	48-50	52-54	56-58

GUARANTEE

ALL CINTAS MERCHANDISE IS UNCONDITIONALLY GUARANTEED AGAINST DEFECTS IN WORKMANSHIP AND MATERIALS. Unless defective, garments which have been worn, laundered or altered cannot be returned or exchanged. Also, garments that are custom manufactured sizes or have special trim application such as special emblems, direct embroidery, epaulets, reflective striping, route book pockets, etc. cannot be accepted for return or exchange because they cannot be restocked or resold to other customers.